

The Historical Society of the Crescenta Valley Ledger

Montrose

La Crescenta

Verdugo City

Highway Highlands

La Canada

Flintridge

March 2010

The Newsletter of the Historical Society of the Crescenta Valley

Issue 68

CURRENT HSCV INFORMATION

Lets try this again -- previously cancelled due to rain....Re-presenting:

Supervisor Michael Antonovich, part of our Local History

Supervisor Michael D. Antonovich has been the Los Angeles County Supervisor for the 5th District for nearly 30 years now, and has had an unmatched career of public service. He is powerful and influential, representing over 2 million residents covering an area of 2000 square miles.

Supervisor Antonovich will give us an overview of his own life, from his beginnings as a history and government teacher back in the '60s, to his election to the State Assembly in the '70s, and into the present as County Supervisor. Mike Antonovich's life has been one of constant and dedicated public service, and he will talk about that lifelong commitment and it's origins with his 5th grade teacher.

The Supervisor has been a particular friend to our area, where he and his staff are familiar faces in the community. The Supervisor is a big fan of our local history, and is in fact an honorary member of the Historical Society. But more important, he has MADE local history, and has been a key player in developing our area into the gem it has is today.

Come and hear the dynamic history of a modern historical figure, in his own words and in person.



Join us on Monday, March 15th, 7:00 p.m.

At the **Center For Spiritual Living**

(formerly known as the La Crescenta Church of Religious Science)

Located on the corner of Dunsmore and Santa Carlotta



-Members Only-

Rancho La Canada, Locations Tour

RSVP Required!



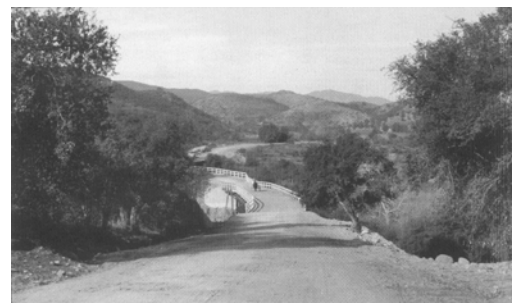
The movie **Rancho La Canada** covers much of the dynamic history that occurred all around us. Join **Rancho La Canada's** creator, John Newcombe, on a personal tour of the historic sites covered in his movie. We'll be riding in a bus (provided by Supervisor Antonovich) equipped with a DVD player and monitors, so that we'll be able to watch portions of the movie that relate to the sites as we visit them. A few of the sites we'll visit are Beulah Louise Overall's house, J.C. Penney mansion, and the Flintridge Hotel.

This is one of our few **"Members Only" limited seating tours**, as the bus only seats 47! The first RSVP's to call in get a spot. Call 818-957-2968, and leave a message: with your name, number in your party, and a phone number. We will create a waiting list for this tour as well, so if you need to cancel your reservation before the tour, please let us know, so that others may take your spot.



Saturday March 27th, 1PM
(returning about 5PM)

Meet at St. Luke's Church,
2563 Foothill Blvd



A New Movie from John Newcombe: *Winnetka Story*

Saturday March 13th at 1:00 PM

La Crescenta Library, 2809 Foothill Blvd.

We're all familiar with the award-winning documentary *Rancho La Canada* created by local filmmaker and historian John Newcombe. The success of that film inspired Newcombe to examine the town he grew up in and create this tribute in the same engaging style as *Rancho La Canada*. John will present selected clips from this feature length movie, including the dramatic shipwreck story of the Lady Elgin, and the story of Winnetka's contribution to the world, the invention of the speed bump.



Winnetka Story is a feature length documentary about the history of Winnetka and the North Shore, Illinois. Winnetka native, John Newcombe, is an award-winning filmmaker who lives and works in Los Angeles. His documentary, *Rancho La Canada*, was given the prestigious LA County Commendation Award. John is also an accomplished cartoonist. His nationally syndicated comic strip **Zack Hill** can be found in over 100 newspapers.



St. Luke's of-the-Mountains
Episcopal Church
La Crescenta, California



St. Luke's Church Tour

Sunday, March 21st, 1:00 PM

St. Luke's of the Mountains, 2563 Foothill Blvd.

The dust has finally settled from the recent tug-of-war between the Anglicans and Episcopalians over St. Luke's church. Many of us consider St. Luke's to be the architectural gem of the Crescenta Valley. Designed and built in 1924 by the world famous artist Seymour Thomas, its distinctive European appearance has made it an instantly recognizable icon of La Crescenta.

Come with us and take a fresh look at this beautiful stone church, with an emphasis on viewing the artwork this church contains. Rev. Bryan Jones, Vicar of St. Luke's, will be pulling out some of the Seymour Thomas pieces that have not been seen in many years! Charlie Shelton, reporter for the CV Weekly newspaper will be our guide and historian for this event.



Crescenta Valley Heritage

By Sharon Weisman

Mother Nature gave lie to my words in last month's column before they could reach you. Not all our hillsides held. We've had more evacuation orders that turned out to be false alarms but we never know when gravity, moisture, or whatever – maybe even earth tremor – will cause mud and debris flow or rock flow and landslide. Please continue to be aware of the weather conditions but don't lose sight of the fact that some disasters come with no warning at all and stay prepared.

A few homes are changing hands, even with the lingering recession, so if a new family moves into your neighborhood please help them get acquainted with the local resources to help them in case of the unexpected.

This might be a good time to review your earthquake supplies and replace anything necessary. If your budget permits, give your stored unexpired non perishable food to a local food bank and restock for your family so you don't have to think about it for another year. The community's largess from holiday collection drives has been distributed but the need continues.

Speaking of renewal, the charred **San Gabriels** are showing lots of color. Not only do we have light colored rock, dark ashy soil, reddish brown singed chaparral and dark green surviving foliage, but bright green new growth and purple lupine. **Spring** and **Daylight Savings Time** arrive the same weekend: **March 20-21**.

Let's not forget pressure on our aquifers continues, despite the recent and predicted rains. Preserve as much of our precious water as possible. Deploy rain barrels and use what you collect to water your landscaping.

Springtime brings **Arbor Day** and **Mother Nature** cooperated with **Glendale's** plans and merely sprinkled a bit on the **March 2** celebration at the **Casa Adobe de San Rafael**. 87 trees were donated this year to bring the total up to **6,824 trees** planted around town in the 60 year history of **Glendale Beautiful**. The printed program featured photos of the large oak tree in **Deukmejian Wilderness Park** before and after the **Station Fire**. Several of the trees donated were in honor of the fire fighters and others instrumental in saving the historic native tree.

If you missed this party, you still have a chance to attend the **Arbor Day** festivities in **Two Strike Park**. **LA County Supervisor Mike Antonovich** will be the keynote speaker. The event honors community volunteers. **March 27** from 9 to 11 am, 5017 Rosemont Ave., La Crescenta.

Glendale Planning Staff continues to work on the **North Glendale Community Plan** with the help of **Advisory Committee** member **Susan Bolan** who volunteered to help planner **Laura Stotler** with organizing the report. **Glendale's** website tells us: Next community meetings are tentatively scheduled for **Monday, March 22, 2010** and **Wednesday, March 24, 2010** from 7 - 9:00 pm at **Clark Magnet High School**, located at 4747 New York Ave. Please watch the local papers or check the city's website, www.ci.glendale.ca.us, for confirmation.

The same program will be given both days. That's a good thing because the **Crescenta Valley Community Association** meeting is also **March 24**. The discussion on how to control over development, particularly mansionization in the unincorporated **La Crescenta /Montrose** area will continue. Also likely to be covered is the current status of many ongoing issues including the **710 extension**, **Verdugo Hills Golf Course** preservation, **Glendale's** progress on the seismic retrofit of the **Le Mesnager Barn in Deukmejian Wilderness Park** and post **Station Fire** winter storm implications. We might have to consider some reoccurring issues too: public safety and school funding.

March 1 the **Glendale Homeowners Coordinating Council** heard from **GPD** staff about the approximately 1000 early release parolees coming to **Glendale** in the near future. Neighboring jurisdictions will all be getting their share too due to state and federal mandates on prison overcrowding. At the same time police and sheriff budgets are strained. Please be extra mindful of keeping doors and windows locked. Don't leave any valuables in vehicles, or around your property. Contact authorities about anything suspicious.

Lack of adequate state funding is causing the negotiations between **GUSD** and the **GTA** to be particularly difficult this year. I can't help but think that short changing our schools now is just making a public safety problem for later.

Please consider how you can help, via donation of time or money and contact your local school.

Citizen Interest Intense

By Bob McKee and Pete Craig

From 1972 Ledgers

Election night at The Ledger, where phone lines were kept open to serve the public, proved to be interesting and informative as voters in the local area expressed their views and asked for information.

While others on The Ledger staff manned the Downey Computer Center and Baxter Ward and Warren Dorn headquarters, voters called anxiously seeking the results of local races.

A majority of callers expressed avid interest in the Ward-Dorn supervisorial race and while returns were slow coming in before midnight the majority of those interested in that issue reported they hoped Ward would win, as they were "tired" of L.A. County Supervisor Warren Dorn, Ward won.

Proposition DD, a proposal to create a separate Board of Education membership for Glendale College, also was a matter of concern to area voters but none of the callers reflected an opinion on the results given. That measure failed.

The voters proved anxious too, to get election returns and several callers were amazed to learn that returns in the State of California were

not being processed as rapidly as those in other states.

Several voters reported they would be writing the Registrar of Voters and the County Board of Supervisors regarding the slowness of the returns.

The night also had its lighter side as voters asked some out of the ordinary questions and made some out of the ordinary statements.

"How old is ol' President Nixon?" a La Crescenta lady asked election night. "My husband and I were just arguing about how old he is and he said 'about 56' but I read where Pat is 60."

One man called in to complain about voting machines saying the modern method is less-efficient than the old way.

"I don't like this pin-hole voting," he said. "I'd like to put an X on my ballot and I bet they could count it quicker."

One lady asked The Ledger how to get through to Western Union about 10 p.m. when the telegraph company was flooded with calls from people sending congratulations or condolences to candidates all over the country.

"I keep trying to call them," she said, "and it either just rings and rings or else I get this stupid recording. There must be some way to send a telegram."

The lady wanted to send the wire message to President Nixon and his wife who are both, by the way, 59-years-old.

(ADVERTISEMENT)

TRADER JOE WILL BUY YOUR VOTE

Since 1964, Trader Joe offered incentives for voters in voting in primary and general elections.

Once again, therefore, we will give, FREE, a big Hershey bar (regular retail 23) to each voter who turns in his ballot stub at one of our stores. This offer is good until 10 a.m. the next morning after the election!

TRADER JOE—OPEN 7 AM-MIDNIGHT, 3433 Foothill, La Crescenta.

(POLITICAL ADVERTISEMENT) (POLITICAL ADVERTISEMENT) (POLITICAL ADVERTISEMENT) (POLITICAL ADVERTISEMENT) (POLITICAL ADVERTISEMENT)



Re-Elect ASSEMBLYMAN FRANK LANTERMAN PROVEN LEADERSHIP 22 YEARS OF DEDICATED SERVICE

EDUCATION

* An original author of State Scholarship Program. His 1972 bills provided 1800 more scholarships and increased maximum award limit from \$2000 to \$2200 effective July 1, 1973.

* Restored program for Graduate Fellowships necessary for professional training.

* Provided additional funding to local school districts to restore tax base lost to freeway construction.

HEALTH

* Author of L.P.S. Act providing protections never before in law for mentally ill and aged.

* Lanterman Retardation Services Act provides increased care and opportunities for mentally retarded with emphasis on treatment closer to home and family.

ADVOCATE OF LOCAL CONTROL

* Staunch defender of home rule for local government.

FISCAL RESPONSIBILITY

* As Vice Chairman of powerful Ways & Means Committee he voted for Reagan-Moretti Tax Reform and Property Tax Relief.

* Has well-earned reputation as a fiscal expert — watchdog for state taxpayers.

ENVIRONMENTAL QUALITY

* Author of effective bills controlling auto emissions.

* Driving force against air pollution.

COMMITTEE ASSIGNMENTS

- * Vice Chm., Ways & Means Com.
- * Chm., Subcom. State Bonds
- * Vice Chm., Joint Legislative Budget Com.
- * Chm., Subcom. on Highway Structural Safety
- * Member, Transportation Com.
- * Member, Water Com.
- * Member, Subcom. on Health & Welfare
- * Member, Subcom. on Legislation and Executive Affairs
- * Member, Joint Com. on Siting of Teaching Hospitals
- * Member, Com. on Executive Salaries

(Partial List)

Re-Elect ASSEMBLYMAN FRANK LANTERMAN
47th DISTRICT

Re-Elect Lanterman Finance Com., Dr. Ross S. Le Linsky, Treas.

Proposition DD

A SEPARATE
SCHOOL BOARD
FOR GLENDALE
COLLEGE

Yes ☒

SUPPORTED BY:

MIKE ANTONOVICH

"My experience on the L. A. Community College Board of Trustees convinces me that a separate board for Glendale Community College will result in increased quality, efficiency and economy."

Paid for by the Glendale Taxpayers Committee for a Separate College Board

Re-elect Assemblyman NEWT

RUSSELL

He Listens . . . He Acts . . .

Russell Re-election Comm. Robt E. Ogil, Treasurer
912 No. Hollywood Way, Burbank, Ca.

AX TAX! ELECT ROBERT W.

LYON

ASSEMBLYMAN 47th DISTRICT

End 22 Years of Increased Taxes. End Incumbent's "Police State" Mental Law

Friends of Liberty for Lyon
897 E. Colorado, Pasadena

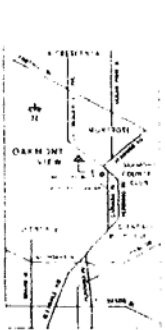
A New World Of Living Pleasure...

Oakmont View with its peaceful, but ever changing panorama, will provide a restful haven you will delight to return to at the close of each busy day. Choose your homesite this weekend.

OAKMONT VIEW

LOTS STILL AVAILABLE FROM \$14,400 to \$35,800

OVERLOOKING OAKMONT COUNTRY CLUB AREA OF '60,000 TO '175,000 HOMES IN THE CITY OF GLENDALE WITH ALL UNDERGROUND UTILITIES AND SEWERS THAT ARE IN AND PAID FOR.



Come to Glendale and take Canada Blvd to Country Club Drive (Oakmont Country Club turnoff). Follow Country Club to Beaudry Blvd. turn left and follow Beaudry Blvd. all the way to Oakmont View.

Gregg's Homes

ROSE WELLS,
Builders Representative

FOR INFORMATION CALL
243-4205 WEEKDAYS

Builders in Glendale since 1936

Computer Succeeds; Reports Vote Total

(Editor's note: The following is a semi-official, 99.71 per-cent vote count in Los Angeles County released shortly after 6 a.m. yesterday morning. It represents all but 22 of the 7,726 precincts.)

PRESIDENTIAL

Nixon (R)1,516,832
McGovern (D)...1,163,205
Schmitz (AP).....70,562
Spock (P&F).....16,446

CONGRESSIONAL (20th Dist.)

Moorhead (R).....120,299
Binkley (D).....89,219
(24th Dist.)
Rousselot (R).....141,274
Mandell (D).....60,170

STATE SENATE (19th Dist.)

Richardson (R)....139,812
Hart (D).....71,322
(21st Dist.)
Harmer (R).....153,897
Rifkin (D).....72,027

ASSEMBLY (43rd Dist.)

Antonovich (R).....60,061
Thornton (D).....24,564
Allred (P&F).....3,922
(47th Dist.)

Lanterman (R).....56,259
Ridenour (D).....32,148
Lyon (AP).....3,786
(54th Dist.)

Collier (R).....69,400
Regnier (D).....24,495
(57th Dist.)

Conrad (R).....54,227
Berman (D).....71,894
Howard (P&F).....3,734
(62nd Dist.)

Russell (R).....76,775
Sartorius (D).....28,507

COUNTY

(Dist. Attorney)

Busch.....1,353,457
Bugliosi.....1,343,164

(Supervisor)

Dorn.....279,860
Ward.....335,977

La Crescenta

OPEN SUNDAY 1 - 5

3026 Prospect Avenue

Large 16 x 34' living room, 2 bedroom plus guest room, 1 3/4 and 1/2 bath, wall to wall carpeting and custom drapes. Just listed at \$30,500.

DRASTICALLY REDUCED

3 and family room, 1 3/4 baths, double garage on quiet deadend street above Foothill. Large master bedroom and family room, has sliding doors to brick patio, level tree shaded lot, fenced yard. Drastically reduced to \$31,000.

SPANISH IN MONTROSE

Large 4 bedroom, 31 x 15' living room with fireplace, formal dining room, nice kitchen, large enclosed patio on 100 x 150' R-3 lot. Great for the big family. ONLY \$33,000.

R-3 CORNER

2 Bedroom, large dining room, service porch, fenced rear yard. Reduced to \$22,500.

3 UNITS

Close to church, shopping and Bus. Large lot with room to build more. Only \$34,950.

GLENDALE

3 Units consisting of 1-2 bedroom, 1-1 bedroom and single, on R-4 lot. Only \$23,950.

Gladys McClenahan

REALTOR, MULTIPLE LISTINGS

4001 Ocean View, Montrose. 249-1435, 249-0050

2 OPEN SAT. and SUN. 1 - 6 P.M.

9332 HAINES CANYON

Executive view home on secluded 1/3 acre with heated pool — beautifully landscaped, with waterfall. 4 bedrooms, 2 baths, formal dining room and more. \$43,500.

2926 HAWKRIIDGE DR.

Picturesque 4 bedroom, 2 bath home with family and formal dining rooms overlooking all of Crescenta Valley. Professionally landscaped. \$55,400.

6803

FOOTHILL
TUJUNGA
352-3191



2709

FOOTHILL
La Crescenta
248-1581

OPEN SUNDAY 1 - 5

5140 NEW YORK

3 BEDROOMS, DEN, ENCLOSED PATIO AND HEATED POOL. 1 3/4 baths, central air conditioning, carpets and drapes. Many other extras. Sweeping view! Only \$37,950.

ROOM FOR TRAILER

2 Bedrooms and den. Just listed, 1 1/2 baths, carpeted, secluded. Only \$18,500.

MONTROSE

Unique 3 bedroom home, fireplace, huge 2 car garage, 74 x 149' lot. \$19,500.

CAPE COD

Especially nice 2 bedroom home in lovely country surroundings, many flowers and fruit trees, 80 x 112' lot. Assume GI loan. Only \$21,950.

HOME AND INCOME

JUST LISTED — Two 2 bedroom units. Close to shopping and transportation, carpeted, shake roof. ONLY \$41,950.

APPRAISAL SERVICE



2400 FOOTHILL (at Briggs)

248-4205

Complete Lumber & Hardware

Sand • Gravel • Cement
Brick • Cement Blocks
Electrical and Plumbing Supplies
All Aluminum Screen Doors

OPEN

DAILY 7:30 A.M. to 5 P.M.
SUNDAY 9 A.M. to 1 P.M.

Foothill Lumber and Hardware

3522 FOOTHILL BLVD. • 248-3983

Mariner Out of Gas: JPL Ends 'Most Successful' U.S. Mission

Jet Propulsion Laboratory scientists Friday reported Mariner 9 has run out of attitude control gas and transmissions from the orbiting spacecraft have been discontinued.

Designed for a 90-day investigation of Mars, the Mariner spacecraft was in its 698th orbit and was just 17 days from completing a full year in orbit.

Scientists report the spacecraft was being maneuvered to point the high gain antenna toward Earth for transmission of 15 photographs when the nitrogen gas supply was exhausted. At that point the transmitter was shut off to avoid disturbing intermittent radio communications as the craft drifted back and forth, creating power surges from the solar panels.

Mariner 9 will be in orbit around Mars for at least 50 years and could circle for 100 years. The mission was designed to keep it up for at least 17 years to insure no earthly contamination of Mars prior to the Viking lander series and scientific search for native Martian life.

The Mariner 9 shutdown occurred at 11 a.m. PDT. The JPL craft — generally described as the most productive scientific mission accomplished by the U.S. — produced 7,329 photographs of Mars and its moons, and more than 46,000 ground commands were carried out.

This included waiting out a huge dust storm upon arrival in November, 1971, restructuring of the basic photo mission around that dust storm, and an eight month extension of the mission.

JPL is now preparing for a dual investigation of Venus and Mercury by a Mariner class spacecraft to be launched next year.

IT WAS SURE

Panguitch, Utah (UPI)

--In 1875, Ebenezer Bryce, the first white man to homestead in the region of Bryce Canyon, now a national park, was asked what he thought of the two-mile-by-three-mile geological wonderland.

"Well, it's a hell of a place to lose a cow," he said.

Parents Seek Pet Raccoon's Owner

The parents of Wayne McMillen, 8, of Sunland, report their son was bitten Oct. 29 by an unknown woman's pet raccoon in La Crescenta Park.

Mrs. Thomas McMillen asks the lady pet owner to contact her immediately at 352-4844 to let her know if the animal had had rabies shots.

Mrs. McMillen's doctor informed her raccoons are the number one carrier of animal diseases and that rabies may not show up in humans for six months after a bite. If the raccoon has not had shots, the doctor said, it would be necessary for the boy to undergo the Pasteur treatment at once.

Wayne was bitten by the raccoon during a Cub Scout picnic in the park last Sunday. He told his mother the raccoon was led on a leash by a woman stroller who may live near the park.

From 1972 Ledgers

COME IN AND LET US DO THE WORK

FREE CAR WASH

With Gas Fill Up (Min. 14 Gal.)

MOST MAJOR CREDIT CARDS ACCEPTED

Courteous Personnel, Excellent Service — and LOTS of Suds.

Montrose Car Wash

FRED KOBER OPERATOR
OCEAN VIEW BOULEVARD
at VERDUGO ROAD

OPEN 7 DAYS — SUNDAYS 9 TO 3

Phone 249-0212

WE'RE MOVING

ENTIRE STOCK MUST GO!

40 TO 50% OFF

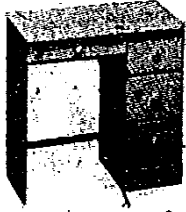
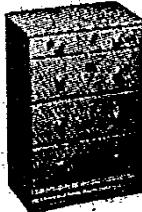
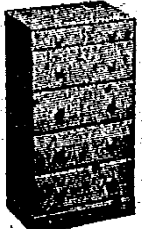

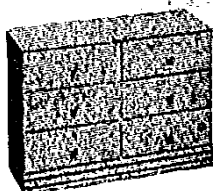
ON ALL MERCHANDISE

LOVE 'N STUFF DOUBLE KNITS BAGGIES
A-1 BELLS KNIT TOPS
JANTZEN FLARES ETC.

CLOTHES-R-YOU

Indian Springs Shopping Center — 2029 Verdugo Blvd.

Want To Save Money? See Us.

		
desks from 21.88	4 dr. chests from 19.88	5 dr. chests from 26.88
		NOTE! Shown here are just a few different styles we carry in stock . . . and WE HAVE MUCH, MUCH MORE!
lingerie chests from 24.88	6dr. dressers from 27.88	

Family Fair Quality Unfinished Furniture

3507 Foothill Blvd. (between Shaker's and Jessup's) La Crescenta
Daily 10-6, Sat. 9-6 Sun. Days 11 to 4 — Free Delivery 248-6967

From 1972 Ledgers

Movie Makers Aid Rescue In Forest

A camera crew shooting a pilot film for a TV series about survival helped rescue a man trapped underneath his car that overturned on Angeles Crest Highway Wednesday.

The accident victim, James R. Larson, 29, of Sherman Oaks, escaped uninjured from the convertible that rolled over on the mountain highway just north of Redbox Ranger Station.

His rescue was aided by a film crew from Universal Studios who were shooting a pilot called "Life and Death" nearby.

CHP officer Walter Means who investigated the accident said the car went out of control on a curve and rolled over.

NATURE'S HEALTH FOODS

VITAMINS • PROTEINS • BOOKS
COSMETICS • DIET FOODS
JUICE BAR • 249-6227



2417 HONOLULU AVE. — MONTROSE
On the Mall Next to Swedish Table
• JOHN BRAINARD • GARNET BRAINARD
— PARKING IN REAR —

DATSUN

Lease or Buy a 1972 Brand
New Datsun. Call us for 1972
Datsun prices.

248-4212

FOOTHILL DATSUN
3322 Foothill Blvd.
La Crescenta, Calif.



I'M A SHINY NEW PINTO
RENT ME **5⁰⁰** Per Day
PLUS Mileage

DICK MAGEE FORD
7200 FOOTHILL BLVD. — TUNJUNGA

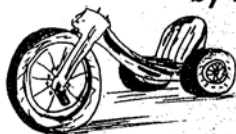
 RENT-A-CAR CALL 352-6031

Thursday, Friday and Saturday

Quantity Limited. Sorry, No Lay-aways

BIG WHEEL

by Marx



SPECIAL

\$12⁸⁸

A real "RALLY TYPE"
SPORT CYCLE with
3 Mag Wheels and
Motor Sound.
REG. \$16.88

Dorsey's

2233 Honolulu

Montrose

The Kahlil Gibran Diary for 1973

For each week of 1973, a newly
chosen fragment from *The Prophet*
and his other writings—and space
for your own thoughts and doings, day
by day. Red, blue, or ivory binding.
219 pages, \$4.50

Kahlil Gibran's masterpiece
THE PROPHET
\$4.50 • Pocket ed., \$4.50 • Deluxe, \$10

**CRESCENTA VALLEY
BOOK SHOP**

2272 Honolulu Mall • 249-3824

OPEN SUNDAY 1-5 P.M.

Weekdays 9 AM - 9 PM. SAT. 9 AM - 6 PM

CHINESE and American Food

LUNCHEON SPECIAL

Seasonal Chinese Lunch and
gourmet American entree
Monday thru Friday 11 a.m.
to 3 p.m.

FOOD TO GO

KING YUEN

For Reservations: 248-2131
2650 Foothill Blvd. — La Crescenta

From
LOVE'S
to You...

- Pork
- Chicken
- Ribs
- Beef
- Ham
- Shrimp
- Steaks

Visit
**Lion's
Den
Cocktail
Lounge**

Food-to-Go



Lunches
Dinners

Wood Pit Barbecue

6272 Foothill Blvd., Tujunga, La Crescenta
248-4004

LUCKY BARBER SHOP

NEW CUSTOMERS ONLY — MON. THRU THURS.

\$2.00 OFF

on a complete
Hair Style with
This Coupon

\$1.00 OFF

ON ANY REGULAR
HAIRCUT

No Appt. Necessary
—248-9920—



Regular Prices

Reg. Men's

Haircut **2.50**

Reg. Children's

Haircut **2.25**

Trim **1.50**

Style **6.50**

LUCKY SHOPPING CENTER

6228 Foothill Blvd. — Behind Wells Fargo Bank

THE ROYAL AWARD 1200 ELECTRIC TYPEWRITER

- 12" Carriage
- Full Size—88 Character Keyboard
- 1, 1½, 2 Line Spacing
- Touch Set Margins
- Auto Repeat Key (x) (:) (.)
- Fixed Paper Guide
- Erasure Table
- Tabulator
- Carrying Case

\$109⁹⁵



REG. \$169.00

Stereo
Sound
Center

TYPEWRITER CENTER

2307 Honolulu • Montrose
249-2083

THE ROYAL BUDGETMASTER ELECTRIC ADDING MACHINE

- 8 DIGIT TOTALS
- MULTIPLICATION KEY
- ADDS, SUBTRACTS
- PROFESSIONAL
KEYBOARD
- 5 YEAR GUARANTEE

\$69⁹⁵

REG. 99.95





Historical Society of the Crescenta Valley
c/o 2717 Altura Ave.
La Crescenta, CA 91214

Membership Renewal Time

Don't forget! We count on you
► Renewal Envelope Enclosed

Historical Society of the Crescenta Valley

Presents:

(previously cancelled due to rain)

Supervisor Antonovich, part of our local History

Monday, March 15th, 7:00 PM

At the Center for Spiritual Living

Located on the corner of Dunsmore and Santa Carlotta

See inside: *New Film by John Newcombe—March 13*

St. Luke's Church Tour—March 21

MEMBERS ONLY Tour—Rancho La Canada—March 27, RSVP Required!

Please check your mailing label for accuracy.

Remember:

2010 MEMBERSHIPS RUN FROM MARCH 2010 TO MARCH 2011

THANK YOU TO ALL OUR MEMBERS
FOR YOUR CONTINUED SUPPORT!

Questions or changes?

Call Pam: (818) 957-2968



We're always interested...

We love to hear your recollections about Crescenta Valley from times past. Share your stories with us, please! Let us share your memories with our members.

e-mail: lawlertmom@yahoo.com

Mail: 2717 Altura Ave.

La Crescenta, CA 91214

Basic Memberships:

One person.....\$15

Couple/Family...\$25

Student.....\$10

Additional Donation Levels:

___ 1. Company of the Verdugos \$25-74

___ 2. Tribe of Wakangva-Tongva \$75-149

___ 3. Regiment of Col. Pickens \$150-299

___ 4. Society of Dr. B. Briggs \$300-499

___ 5. Vintage of Le Mesnager \$500-749

___ 6. Water of the Big Flood \$750-999

___ 7. Forest of Big Cone Spruce \$1000+

Travel back in time to...1972

Our March Newsletter will feature
articles and ads from
1972 Ledgers

(beginning with page 4)