

## The following collection of photographs is shared with us by the Little Landers Historical Society

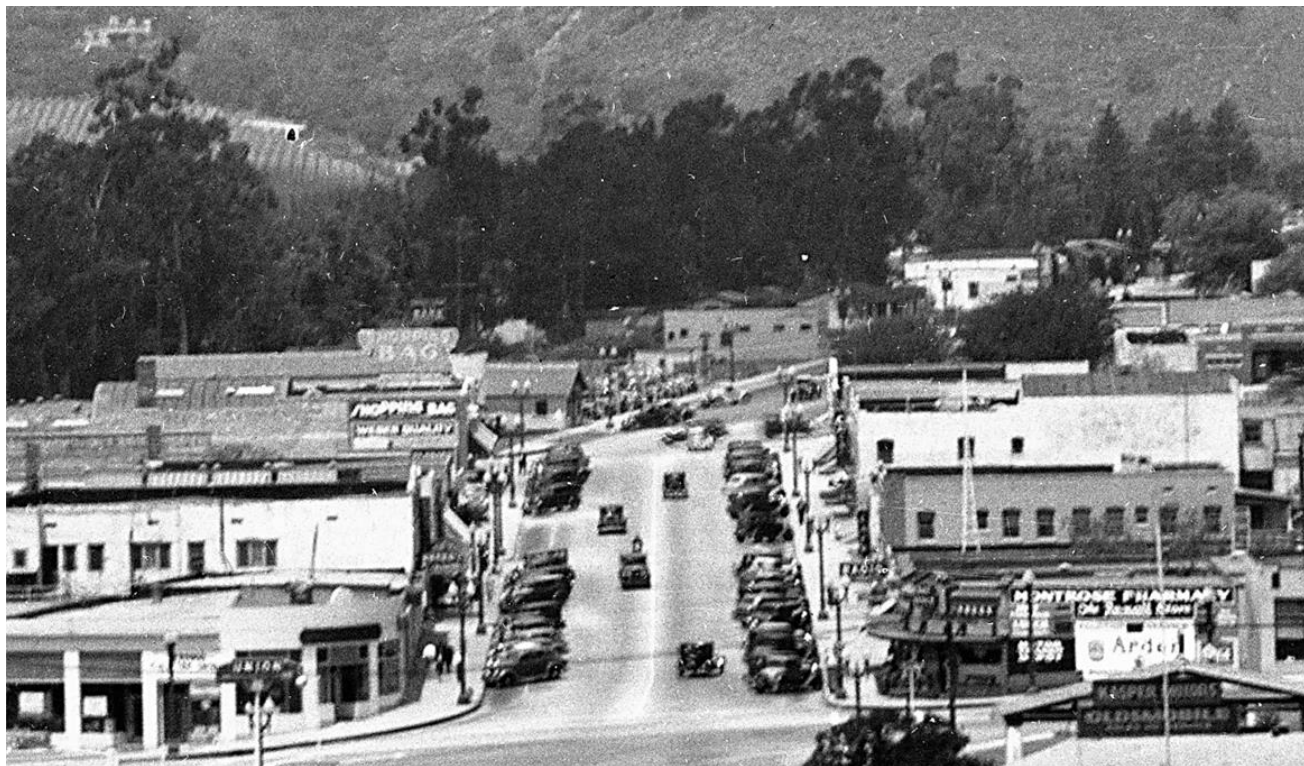
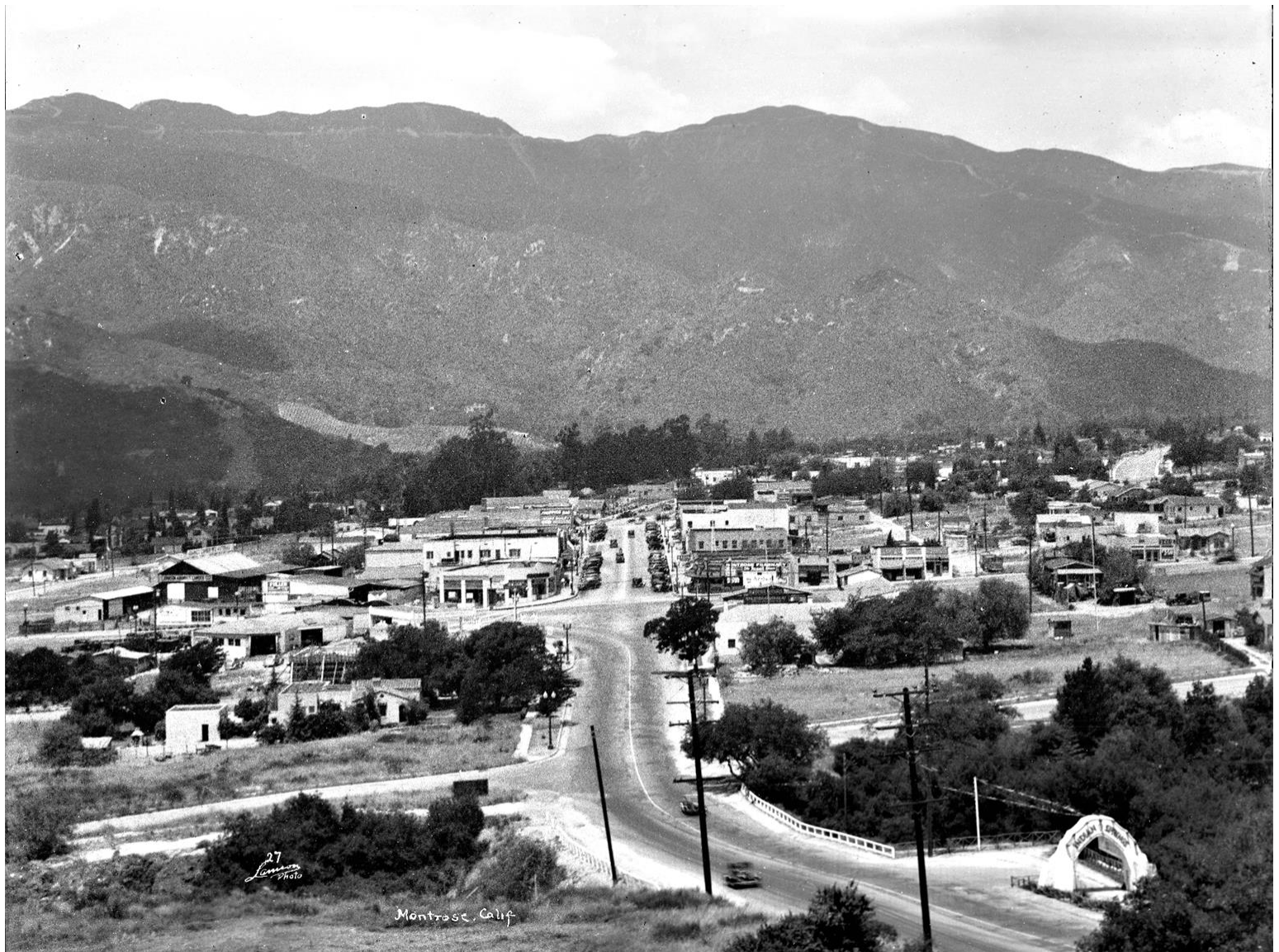
The following images were scanned from eight by ten-inch negatives; over two hundred sixty negatives were found in 2021 in a cardboard box when the building on the corner of Commerce and Tujunga Canyon Blvd., that formerly housed the American Foothill Publishing Company, was being cleaned out for a new business. The Horwitz family owned American Foothill Publishing, which published the Record Ledger, and it is probable that these negatives were associated with that newspaper. The box was among materials being discarded by the Horwitz family following the death of Mrs. Horwitz. It was given to Sonia Tatulian who donated it on behalf of the Horwitz Family to the Little Landers Historical Society at Bolton Hall Museum.



Photo taken May 18, 1937 of the old La Crescenta Presbyterian Church, built in 1923 on Montrose Ave. It was completely rebuilt in 1953.

March 1937, view inside the Montrose Theater.

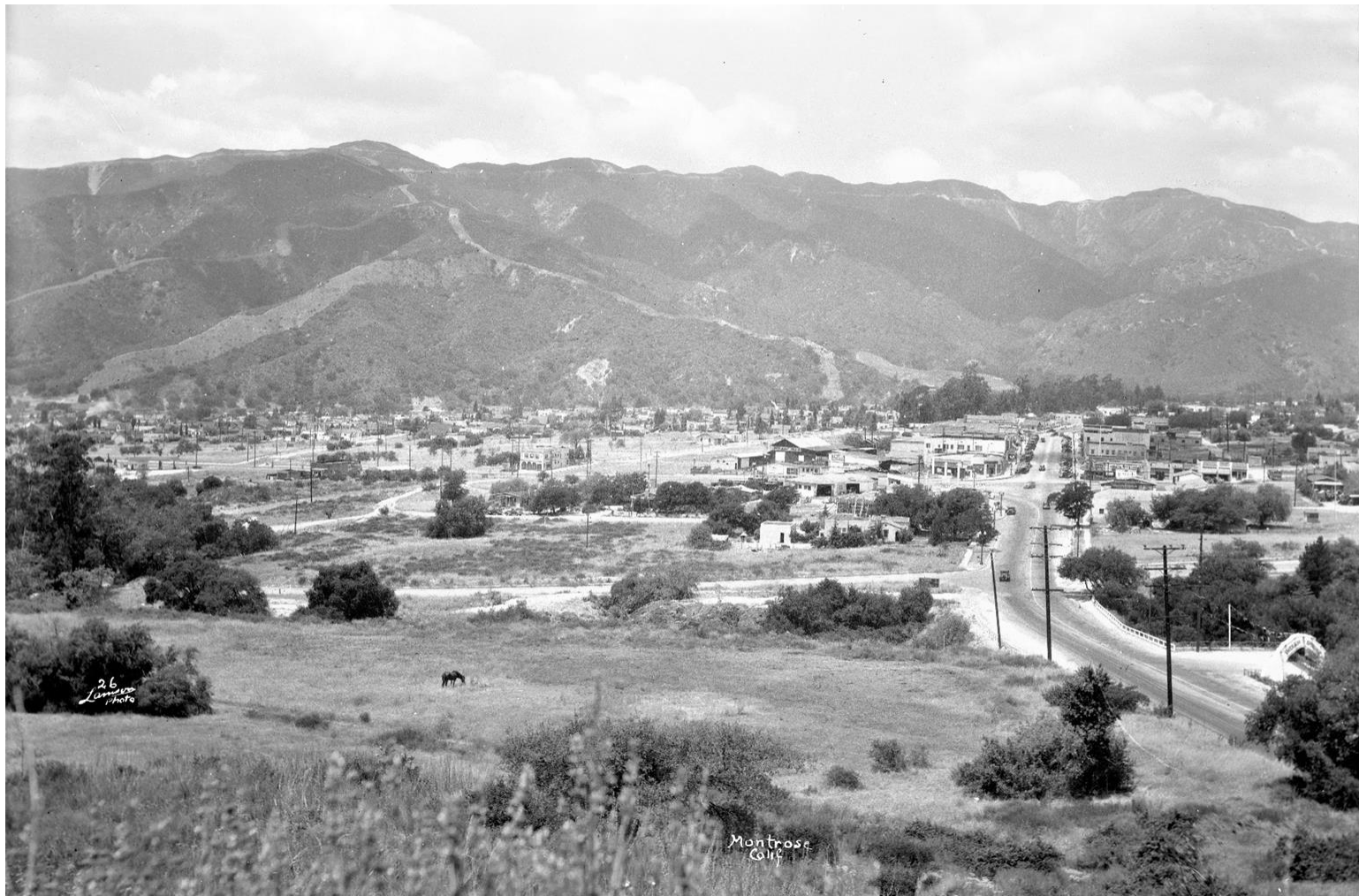




Above, is 1937 Lamson #27 photo, showing a west-facing view of Montrose with residential areas in foreground and Indian Springs entrance at front right, entrance off of Verdugo Blvd. Intersection of Honolulu, Verdugo and Montrose is near center of photo.

Below, a zoomed-in view of the Montrose Shopping Park portion of the photo above. It shows cars parked at an angle to stores along. Montrose Pharmacy is on the right (northwest) corner, Shopping Bag market is on the left

(south) side of Honolulu with tall signs on top. Broadview Drive, south of Honolulu, is lined with tall street trees, Onandarka Ranch house is seen in background on hillside above trees at left.

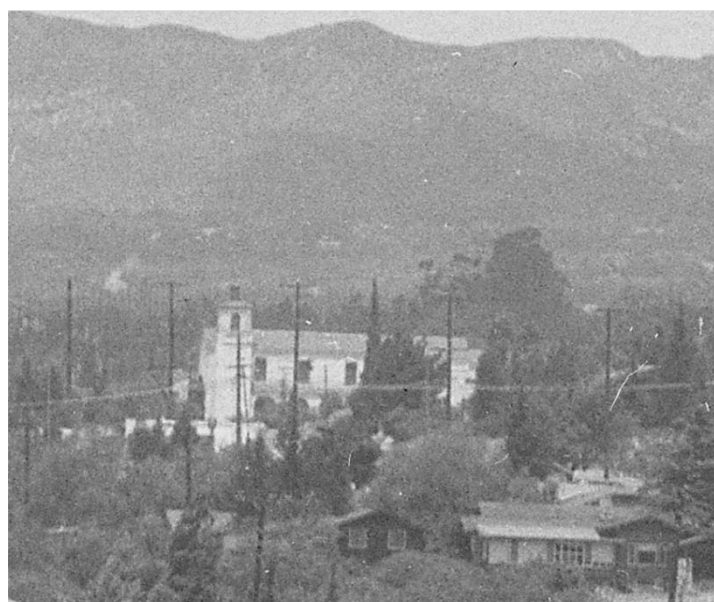
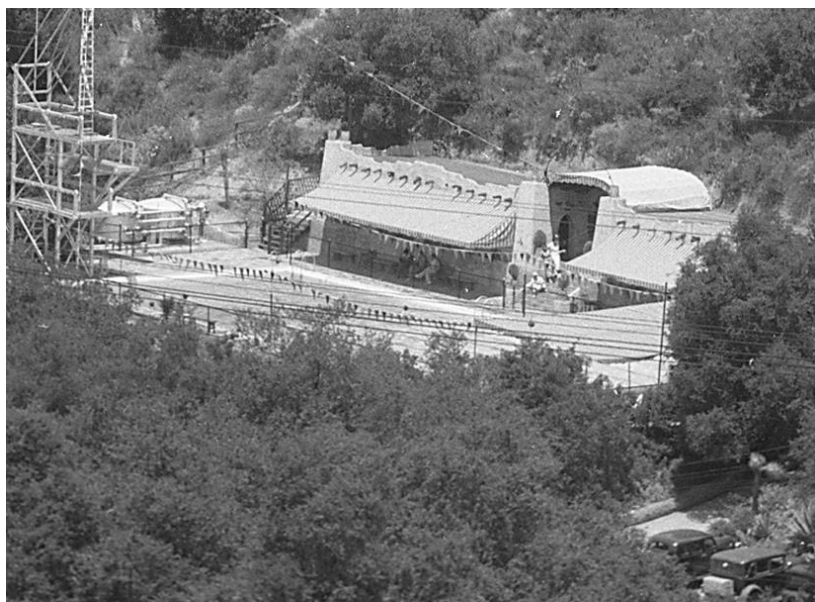


Above, is 1937 Lamson photo #26, view of Montrose, taken from about where Verdugo Hills Hospital is today. Anawalt Lumber barn is near the center of top photo, Indian Springs entrance arch is at lower right of photo, entrance from Verdugo.



Center photo is a zoomed-in portion of top photo, showing Anawalt Lumber, the outlined area is the office and store, the interior views of which are shown in subsequent photos. The Anawalt campus is laid out much differently today with the barn still in place.

Bottom photo is a zoomed-in portion of top photo showing a horse peacefully grazing in the field.



Top photo is 1937 Lamson photo #25, showing Verdugo Blvd in foreground, Indian Springs Resort in center, Indian Springs entrance arch at left, and Montrose, all nestled in the Crescenta Valley between the Verdugo Mountains to the south and the San Gabriel Mountains to the north.

A zoomed-in view of the Indian Springs pool, its diving platforms and buildings, and the edge of parking area, is seen below left. A zoomed-in view of Holy Redeemer Montrose Church is seen below right and is just above center in the top photo.

(Notice that the top photos on pages 8 and 9 can be combined to make one larger view of Montrose.)



Above is an inside view of the Anawalt store, from October 3, 1937. (Lumber is out in the sheds and barn buildings.) There are mirrored cabinets and front door knockers leaning against the counter area.



Middle photo shows the Anawalt office, with probably "HF" Anawalt (Harmon Fred) and his son Bernard behind the desks. HF started Anawalt Lumber in 1921, in Montrose.

Bottom photo, left, is a zoomed-in center segment of the top photo, showing a multi-tiered carousel of nail-bins containing

assorted types of nails, a paint brush display to the left of the nails, and "Keystone Hand Saws, made by Disston, USA," in the case behind the paint brushes.



Bottom right, is the scale used to weigh nails for purchase, zoomed-in from top photo to right of nail-bin carousel.





Above is another view inside the Anawalt store, October 3, 1937. Their office area is behind the 3 frosted glass panels beyond the rounded counter area. A variety of mirrored cabinets are leaning against lower sides of the counter.

At right is a zoomed-in segment of the photo above, showing the Fuller Paints corner, with paint brochures on left side of shelf, paint cans in assorted sizes on the shelves, a door bell chime leaning on wall near right side of photo.

Many flower arrangements are seen in these Anawalt photos, but it is unknown if they are regularly offered for sale, or just for some special event.

